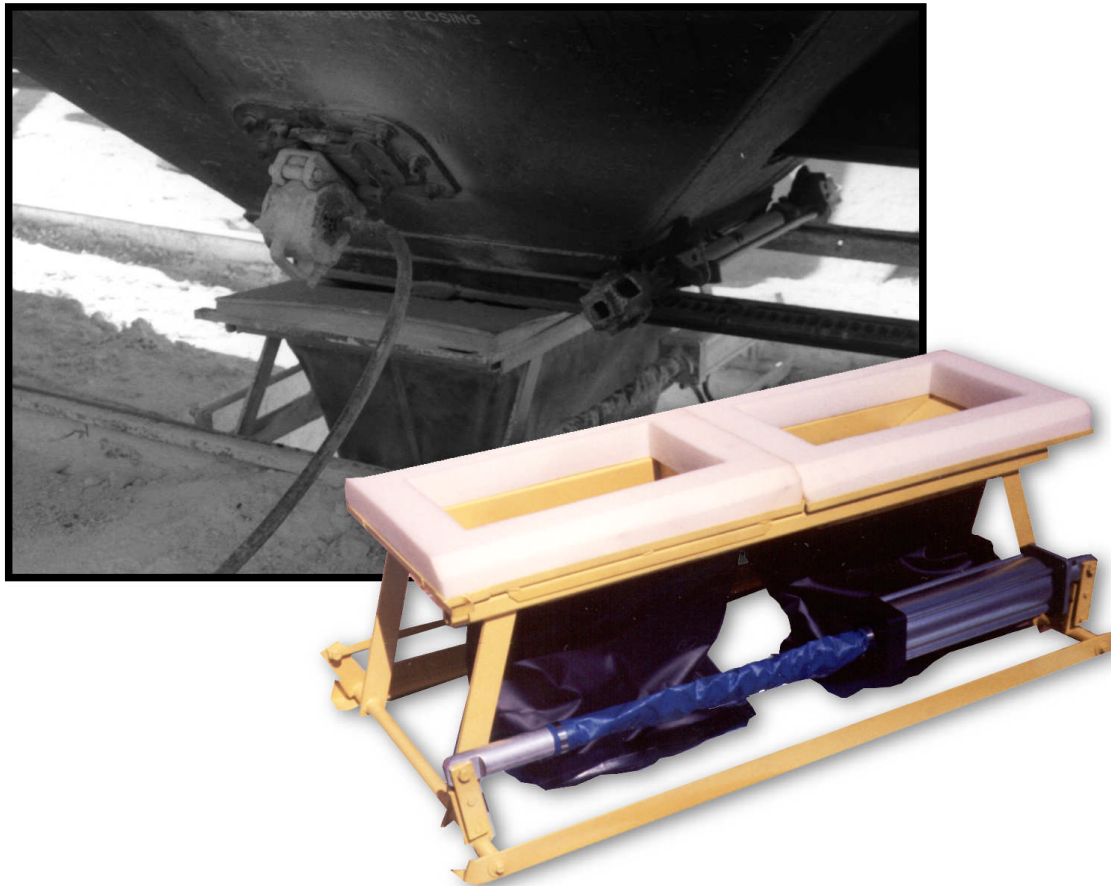

Pneumatic Hopper Car Unloading Lifts

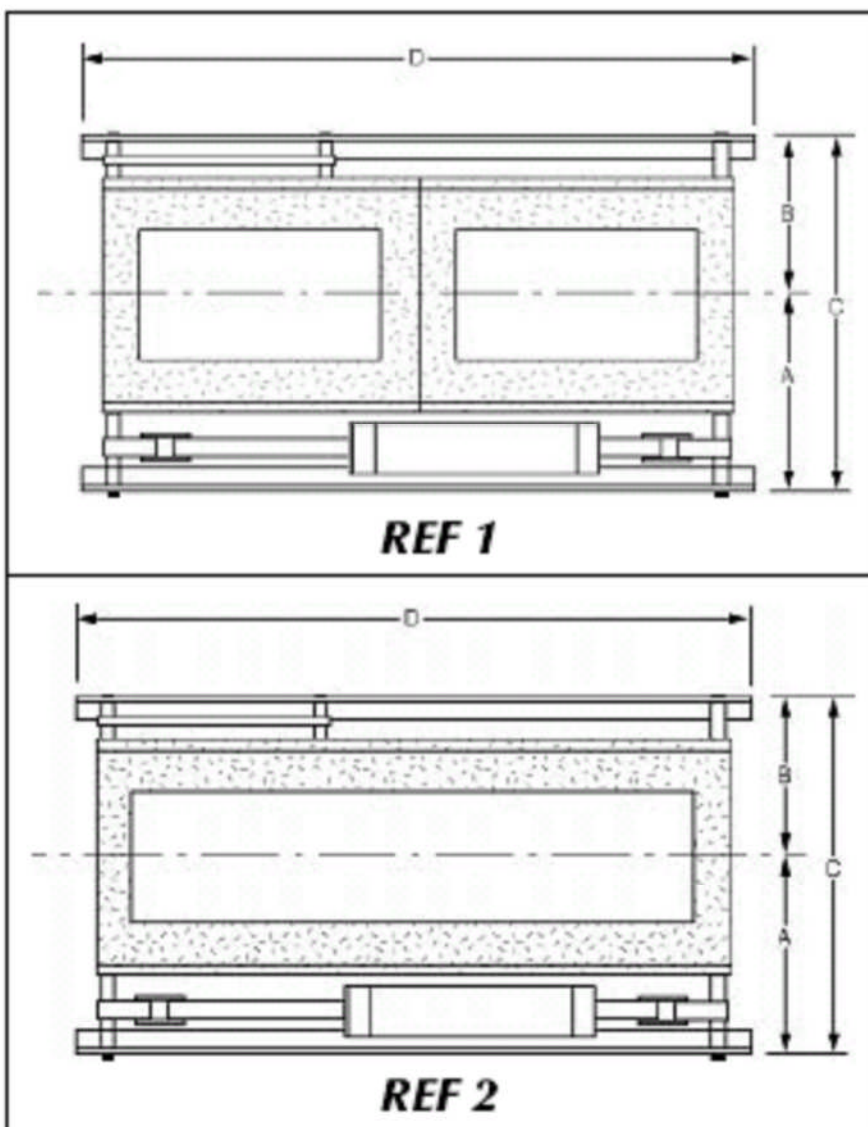


SAFE. CLEAN. RELIABLE.

The HVI LIFT SERIES is a safe, clean, reliable method of containing material during transfer from hopper car to pit conveying system. The operator can raise and lower our Hopper Car Unloading Lift from a safe distance away from the railcar, eliminating the need for terminal personnel to crawl under railcars to make the connection. Use of a Hopper Car Unloading Lift reduces dust levels during unloading, and ensures more of your material makes it to the pit conveyor instead of having to be swept up off the tracks. Our all-pneumatic system and rugged simple design minimize downtime for maintenance & repairs.

HVI Hopper Car Unloading Lifts offer you a highly efficient and surprisingly affordable method of transferring material from hopper cars to pit conveyors. The simple design of our lifts makes them easy to install--only ordinary hand tools are needed, and its rugged construction requires no routine maintenance! Engineered to provide long-term troublefree service, the HVI series of Lifts will keep you at optimal productivity without high maintenance costs.

HVI's Lifts are available in several different sizes--the 485 Series for twin discharge hopper car openings, the 500 Series for single discharge hopper car openings, and the extra-wide central discharge 501 Series. Each set of flow socks is custom made, and available in either our standard 22 oz. vinyl covered cloth, or from 9 oz. white polypropylene food-grade material. As always, Houston Vibrator offers complete engineering and sizing assistance, to insure that you receive the best lift for your application.



| MODEL | CAR TYPE | REF | LIFT DIMENSIONS [in] | | | |
|----------|------------------------|-----|----------------------|-------|-------|-------|
| | | | A | B | C | D |
| 485 | STANDARD TWIN | 1 | 15.75 | 13.25 | 29.00 | 57.00 |
| 485-S | SHALLOW TWIN | 1 | 15.75 | 13.25 | 29.00 | 57.00 |
| 500-1324 | CENTER DISCHARGE 13X24 | 2 | 15.75 | 13.25 | 29.00 | 57.00 |
| 500-1342 | CENTER DISCHARGE 13X42 | 2 | 15.75 | 13.25 | 29.00 | 57.00 |
| 500-1348 | CENTER DISCHARGE 13X48 | 2 | 15.75 | 13.25 | 29.00 | 57.00 |
| 501-2430 | CENTER DISCHARGE 24X30 | 2 | 21.25 | 17.50 | 38.75 | 57.00 |
| 501-2442 | CENTER DISCHARGE 24X42 | 2 | 21.25 | 17.50 | 38.75 | 57.00 |
| 501-2448 | CENTER DISCHARGE 24X48 | 2 | 21.25 | 17.50 | 38.75 | 57.00 |

NOTE: The collapsed height of all units is 5½" above the bottom of the rail.