

MVSI S36 ELECTRIC VIBRATOR SERIES

single-phase

2 poles		
Hz	50	60
RPM	3000	3600



DESCRIPTION						MECHANICAL FEATURES						ELECTRICAL FEATURES			
Part Number	Model	Design	Frame Size	SE	Ex I/2D Temp. Class	Static Moment* in-lbs		Centrifugal Force lbs		Weight lbs		Power Output HP		Max Current A	
						50 Hz	60 Hz	50 Hz	60 Hz	50 Hz	60 Hz	50 Hz	60 Hz	220 V 50 Hz	115 V 60 Hz
600311	MVSI S36-380	S02	00	•	120°C	1.0	1.0	266	383	12.3	12.3	0.15	0.15	0.75	1.52
600312	MVSI S36-480	S02	01	•	120°C	1.8	1.3	464	480	14.1	13.6	0.15	0.15	0.75	1.52
600313	MVSI S36-660	S02	10	•	120°C	2.6	1.8	669	653	21.3	20.2	0.24	0.27	1.25	2.40
600314	MVSI S36-1050	S02	20	•	120°C	4.3	2.8	1107	1036	32.6	30.4	0.46	0.48	2.30	4.50
600366	MVSI S36-1500	S02	20	•	120°C	6.3	-	1615	-	33.2	-	0.46	-	2.30	-
600381	MVSI S36-1680	S02	30	•	120°C	6.8	4.5	1727	1659	46.2	44.0	0.60	0.68	3.25	7.00

CSA Approval for Class I, Division 2, Groups A, B, C and D hazardous locations. Available upon request.

Product approved for European Directive 94/9/EC (EN 61241-0, EN 61241-1): ATEX II2D, tD A21 IP66 (temperature class detailed in table).

All listed products are in compliance with GOST R 51330.0-99, GOST R 51330.1, GOST R 51330.8-99, GOST R IEC 61241-1-1-99.

Product approved for IECEx Scheme following IEC 61241-0, 61241-1: II2D, tD A21 IP66 (Temperature class detailed in table).

In compliance with all applicable European Directives.

MVSI S18 ELECTRIC VIBRATOR SERIES

single-phase

4 poles		
Hz	50	60
RPM	1500	1800

DESCRIPTION						MECHANICAL FEATURES						ELECTRICAL FEATURES			
Part Number	Model	Design	Frame Size	SE	Ex I/2D Temp. Class	Static Moment* in-lbs		Centrifugal Force lbs		Weight lbs		Power Output HP		Max Current A	
						50 Hz	60 Hz	50 Hz	60 Hz	50 Hz	60 Hz	50 Hz	60 Hz	220 V 50 Hz	115 V 60 Hz
601340	MVSI S18-100	S02	00	•	120°C	1.04	1.04	66.4	95.7	12.3	12.3	0.05	0.05	0.43	1.00
601341	MVSI S18-180	S02	01	•	120°C	2.70	1.83	171	167	14.7	14.1	0.05	0.05	0.43	1.00
601366	MVSI S18-250	S02	01	•	120°C	3.38	2.70	215	246	15.6	14.7	0.05	0.05	0.43	1.00
601367	MVSI S18-480	S02	10	•	120°C	7.32	5.11	469	471	27.5	25.7	0.15	0.15	1.00	2.00
601372	MVSI S18-920	S02	20	•	120°C	14.2	9.83	906	904	41.8	40.0	0.16	0.24	1.20	2.80
601373	MVSI S18-1310	S02	20	•	120°C	19.0	14.2	1214	1302	44.9	41.8	0.16	0.24	1.20	2.80
601408	MVSI S18-1690	S02	30	•	120°C	24.9	18.2	1584	1672	60.5	57.6	0.32	0.41	2.15	5.15

* Working Moment = 2 x Static Moment. Static Moment = Unbalance.

Houston Vibrator, Ltd. | PO Box 801882, Houston, TX U.S.A. 77280

phone: 713-939-0404 | 800-320-4044 fax: 713-939-7213 | 866-630-0404 e-mail: sales@houstonvibrator.com web: HoustonVibrator.com

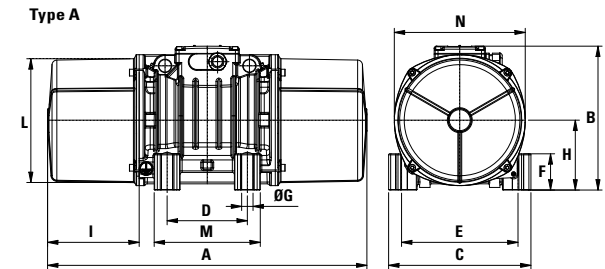
MVSI S36 ELECTRIC VIBRATOR SERIES

single-phase

2 poles		
Hz	50	60
RPM	3000	3600



OVERALL DIMENSIONS (inches)																	
Model	Design	Type	A	B	C	D	E	Foot holes		F	H	I	L	M	N	Capacitor (µF)	
								øG	N°							220 V 50 Hz	115 V 60 Hz
MVSI S36-380	S02	A	8.31	6.02	4.92	2.44-2.91**	4.17	0.35	4	0.94	2.40	1.81	4.06	3.94	4.61	10	28
MVSI S36-480	S02	A	9.25	6.02	4.92	2.44-2.91**	4.17	0.35	4	0.94	2.40	2.28	4.06	3.94	4.61	10	28
MVSI S36-660	S02	A	10.04	7.05	5.98	3.54	4.92	0.51	4	1.10	2.87	2.13	5.00	5.04	5.55	16	25
MVSI S36-1050	S02	A	11.34	7.99	6.57	4.13	5.51	0.51	4	1.18	3.25	2.56	5.71	5.51	6.30	12.5	50
MVSI S36-1500	S02	A	11.34	7.99	6.57	4.13	5.51	0.51	4	1.18	3.25	2.56	5.71	5.51	6.30	12.5	-
MVSI S36-1680	S02	A	12.13	8.50	8.07	4.72	6.69	0.67	4	1.77	3.68	2.48	6.69	6.30	7.17	25	90



MVSI S18 ELECTRIC VIBRATOR SERIES

single-phase

4 poles		
Hz	50	60
RPM	1500	1800

OVERALL DIMENSIONS (inches)																	
Model	Design	Type	A	B	C	D	E	Foot holes		F	H	I	L	M	N	Capacitor (µF)	
								øG	N°							220 V 50 Hz	115 V 60 Hz
MVSI S18-100	S02	A	8.31	6.02	4.92	2.44-2.91**	4.17	0.35	4	0.94	2.40	1.81	4.06	3.94	4.61	3.15	25
MVSI S18-180	S02	A	9.25	6.02	4.92	2.44-2.91**	4.17	0.35	4	0.94	2.40	2.28	4.06	3.94	4.61	3.15	25
MVSI S18-250	S02	A	9.80(50Hz) 9.25(60Hz)	6.02	4.92	2.44-2.91**	4.17	0.35	4	0.94	2.40	2.56(50Hz) 2.28(60Hz)	4.06	3.94	4.61	3.15	25
MVSI S18-480	S02	A	11.85	7.05	5.98	3.54	4.92	0.51	4	1.10	2.87	3.03	5.00	5.04	5.55	5	25
MVSI S18-920	S02	A	13.54	7.99	6.57	4.13	5.51	0.51	4	1.18	3.25	3.66	5.71	5.51	6.30	32/12°	35
MVSI S18-1310	S02	A	15.20	7.99	6.57	4.13	5.51	0.51	4	1.18	3.25	4.49	5.71	5.51	6.30	32/12°	40/35°
MVSI S18-1690	S02	A	15.51	8.27	8.07	4.72	6.69	0.67	4	1.77	3.60	3.46	6.61	6.30	7.01	96/16°	160/40°

** Slot.
° Start capacitor / Run capacitor